

# ADAMS CHAPTER Update

A publication of the Adams Chapter of Trout Unlimited  
Traverse City, Michigan • [adamschaptertu.com](http://adamschaptertu.com) • February 2011



## President's Report

*This is my first President's Report so let's get the formalities out of the way. I live in Traverse City with my wife and two young boys who are bugging me to play as I write this. I love our fish and our rivers, and hope I can live up to our past Presidents.*

There are some great things happening in the Adams Chapter right now. Among those are some new Board members who are motivated and have already made some great contributions. The Board has also begun a visioning and planning process with the goal of documenting our goals for the rivers in our district and how we intend to achieve those goals. The process will result in new messaging and communication tools so the Adams Chapter's voice is heard by the public and our governmental officials. Finally we intend to find ways to make our money go farther in the coming years by using it to work on and complete more of our own projects. These documents and plans will be unveiled over the next few months and at the 2011 Banquet.

The Banquet is set for April 16, 2011 at the Williamsburg Dinner Theatre which has been a great venue. We will be making some changes to better use the space as well as adding some exciting new raffle and auction items. If you have ideas, items to donate, or are willing to lend a hand we would love to hear from you. Expect to hear more soon as we work out the details.

Finally, I want to leave you with some thoughts on the future of the Boardman River. The Boardman is in the center of our district and will be seeing some exciting changes very soon. The proposed schedule for beginning the Brown Bridge Dam removal is June of 2012. That is 16 months from now! Dam removal means many opportunities to make the Boardman into the trout stream that it can and should be. The Adams Chapter should be a leader and make sure it happens. It will take a lot of work and a lot of time, but together we can do it. Of course, then we'll all have to do our best to keep it a secret.

Jeff Jocks

## Calendar of Events

February 23 General Membership Meeting  
(Union Cantina on Union St. downtown  
next to Cousin Jenny's) 7 p.m.  
Presentation – "Fishing in Labrador"  
by Ken Gum

March 23 General Membership Meeting  
(Union Cantina) 7 p.m.

April 16 Adams Chapter Banquet  
Williamsburg Dinner Theatre

June 22 Outdoor meeting at CCC Bridge

August 24 Outdoor meeting at Ranch Rudolf

September 16-18 WaWaSum Outing

October 12 General Membership Meeting  
(Union Cantina) 7 p.m.

December 7 General Membership Meeting/  
Elections (Union Cantina) 7 p.m.

**President** Jeff Jocks  
929-9607 • [jeffjocks@yahoo.com](mailto:jeffjocks@yahoo.com)

**Vice President** Mark Andres  
883-1715 • [markandres883@gmail.com](mailto:markandres883@gmail.com)

**Treasurer** Bob Jocks  
421-1339 • [rjocks@juno.com](mailto:rjocks@juno.com)

**Secretary** Jim Zachow  
357-5345 • [james.zachow@charter.net](mailto:james.zachow@charter.net)

**Director** Steve Largent  
883-9960 • [slargent@gtcd.org](mailto:slargent@gtcd.org)

**Director** Gabe Schneider  
517-449-6453 • [gabe.schneider@gmail.com](mailto:gabe.schneider@gmail.com)

**Director** Dr. Ken Gum  
620-1529 • [kgumtrout@aol.com](mailto:kgumtrout@aol.com)

**Director** Jack Murray  
933-3339 • [jmurray39@charter.net](mailto:jmurray39@charter.net)

**Director** Tom Wilcox  
883-6839 • [tomhwilcox@aol.com](mailto:tomhwilcox@aol.com)

**Director** Larry Thompson II  
350-3660 • [dooley2shoes@gmail.com](mailto:dooley2shoes@gmail.com)

**Director** Brian Pitser  
933-4730 • [flyshop@thenorthernangler.com](mailto:flyshop@thenorthernangler.com)

**Director** Jon Ray  
631-5701 • [jray@hawkinsflyfishing.com](mailto:jray@hawkinsflyfishing.com)

**Director** Greg Miller  
989-528-0405 • [gmliller@torchlake.com](mailto:gmliller@torchlake.com)

# ADAMS CHAPTER Update



Adams Chapter watershed area, we are investigating the addition of the entire Boardman upper reaches to our area so that we may service the entire Boardman watershed.

## Dam Removal Status

*The Boardman River Dams Removal Project is well underway with a recent grant award from the Great Lakes Fisheries Trust of one million dollars for the removal of Brown Bridge Dam. The optimistic time line is for deconstruction to begin late in 2011.*

The City expects to hire a consultant by the end of February to oversee the work. Environmental and engineering designs and plans will be finalized by early summer.

The Adams Chapter continues to monitor the process and is working with the City and County to make sure that any removal efforts include monitoring closely and accounting for any and all sediment in the system.

The Chapter is also finalizing its position of maintaining a barrier to fish passage at the location of Sabin Dam once that dam is removed.

## Asian Carp

*The United States Army Corps of Engineers (USACE), in consultation with other federal agencies, Native American tribes, state agencies, local governments and non-governmental organizations is conducting the Great Lakes and Mississippi River Inter-basin Study (GLMRIS) pursuant to Section 3061(d) of the Water Resources Development Act of 2007. GLMRIS will explore options and technologies – collectively known as aquatic nuisance species (ANS) controls that could be applied to prevent ANS transfer between the Great Lakes and the Mississippi River basins via aquatic pathways.*

On January 27, the Corps held a public meeting in Traverse City to gather comment on this study. While the study is aimed at exploring options to prevent the spread of aquatic nuisance species, the issue at the forefront of all commentators at the public meeting was focused on Asian Carp. The meeting was well attended with over 150 people at the first of two meetings that day. The large majority of comments focused on the federal government's lack of a timely and meaningful response to the Asian Carp threat. The Army Corps acknowledged this frustration but stated that this study – because of the breadth and scope (studying all ANS) – would take time and money. Federal legislators, including Senators Levin and Stabenow as well as Congressman Camp have all called on the Corps to expedite this study or to complete a separate study focused only on the issue of Asian Carp. More information on the GLMRIS study can be found at <http://glmris.anl.gov/>.

# ADAMS CHAPTER Update

---

## “Fly Casting Accuracy”

*The novice fly angler learns early on that a feeding fish and a perfect fly are meaningless unless they can deliver an accurate cast. This article will deal with the accuracy of the cast and the obstacles that interfere with it. These are difficult concepts to visualize without a rod and line. So, take your time and think through the rules and then try to apply them when we have some warmer weather. For the sake of discussion, we will assume you are casting on the lawn to practice.*

Let's begin with the most obvious of obstacles, the ability to *reach* your target. Wide, inefficient loops are easily blown back or “puddle” short of one's target. Similarly, it is common for one to apply power too abruptly when trying to reach a distant target only to create a tailing loop that knots up well short of it. So, the first point to remember when trying to make an accurate cast is that a tight, controlled loop is essential if one is to reach the target.

Secondly, the trajectory of the cast must be considered. Ideally, we want the line to lay out fully *just above* the ground to avoid bouncing back or being blown off target. Thus, if you're trying to cast tight loops to a target only twenty feet away, the cast must be angled downward to the ground and the back cast must go very high. This short cast is one of the most difficult targets to hit for a novice because it requires such a high back cast which is difficult for novices to achieve because they often fail to watch their back cast and thus do not always stop the rod early enough. And, if the back cast is not high enough, the low cast in front will result in a large inefficient loop that will fail to reach the target.

Aiming too high or too low can also affect the accuracy of your cast. If you allow the line to lay out fully too high above the target, the leader will bounce or blow back, land short, or off to the side. On the other hand, longer casts *must* be aimed higher above the ground to avoid falling prey to gravity before the line has had a chance to lay out fully or shoot to the target. But one should aim only high enough to allow for the line to shoot to the target and lay out just above it. The closer your target, the more your casting trajectory must be tilted forward. Conversely, the farther your target, the higher you must aim.

Next, practice directing the fly line accurately. In a perfect world, your loops are tight and the line will lay out in a straight line to the target. Yet, there are factors that affect accuracy. For the sake of this discussion, let's assume there are no external elements to affect the cast. First, the fly will go where your rod tip is pointing when you stop it to form a loop. The most accurate casts result from a perfectly perpendicular (*not off-the-shoulder or side-armed*) rod and a tight loop that lays out straight toward the target. Since we almost always add more power than is needed to make the line lay out fully, the fly wants to continue beyond a straight line. For every degree a right-handed caster cants the rod off-the-shoulder, the fly will go a corresponding distance past the target to the left of it. When accuracy is paramount, use a perpendicular cast to the target. As the distance increases, it will surely challenge your accuracy.

Remember too that the length of cast is crucial to your hitting the target. This requires judgment that can only

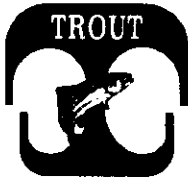
be learned through practice. To gain this judgment, practice in the yard with paper plates set out at twenty, forty, and fifty feet. Put a small piece of yarn on (*or a hookless fly*) and practice hitting the targets. Then add a reach to the cast (*Shooting Lines, July 2007*) to help eliminate drag when you get to the water. Learn to stop the rod to send the fly on its way to the target and to mend the line in the air while the fly is traveling to the target and you will be able to adapt to almost any situation on the river. Try these exercises each time you practice. They will greatly improve the accuracy of your casts.

Other obstacles will interfere with your accuracy as well. Wind (*Shooting Lines, 5/97*), current (*Shooting Lines, 2/95*), drag, fly size, weight and density, desired fly action and stream structures are all problems that frustrate all of us. Yet, the basic principles of accuracy will get your fly to the target in most situations. Practice these things and you will enjoy greater success on the river.

Finally, this June's Trout Unlimited Fly Fishing School (June 10, 11 and 12 at Ranch Rudolf) marks its forty-first year. It's a great place to learn and practice these principles. I hope to see you there!

*Dave Leonhard is a master certified fly casting instructor for the Federation of Fly Fishers, casting instructor for the Michigan Council TU Fly Fishing School, a life member of TU, a charter member of the Adams Chapter of Trout Unlimited in Traverse City, Michigan, owner of Orvis Streamside in Traverse City, Michigan, and director of instruction for the Orvis Michigan Fly Fishing School at the Homestead Resort in Glen Arbor, Michigan.*

Amy - freelance graphics & The Print shop  
New mgr - Mike Niederphuem



# ADAMS CHAPTER Update

A publication of the Adams Chapter of Trout Unlimited  
Traverse City, Michigan • [adamschaptertu.com](http://adamschaptertu.com) • June 2011



## President's Report

*Spring is here – at least it was last week. It seems the trout season is finally upon us and I hope everyone has a great one. I know the Adams Chapter Board is deserving of one. We had a great banquet this year and everyone pitched in to make it so. As with any volunteer organization, the outcome is only as good as the effort put in behind the scenes and the Board's effort was outstanding. I wish I could take credit for the event, but it truly was the Board's work. Especially deserving is Vice President Mark Andres who is responsible for the new format, all of the frames for the artwork, much of the organizing, and a whole lot of other things. If you see him tell him thanks.*

We raised a hefty sum for our rivers and will be putting the funds to good use as always. Thanks to all of our donors listed below and those that wish to remain anonymous. Your generous contributions make it possible to have such a great event. Please visit the donors and give them your business. Most are local and we should return the favor. Thanks also to Mike Delp who gave a colorful reading of some of his work.

With the banquet out of the way, we can return focus to our important task of setting out our Visions and Goals to Conserve, Protect and Restore the Boardman River. We unveiled a draft of the document at the banquet and will be distributing a final draft version to members shortly. The document will be considered for approval at our membership meeting set for May 25 at Ranch Rudolf. Please come to the meeting if you are available and have your voice heard.

To try to match the Chapter's enthusiasm for protecting the Boardman and making sure the dam removal is completed properly I have committed to going to all of the Implementation Team and Project Manager meetings. I hope to begin giving regular updates by email as the process continues. The meetings are open to the public and I encourage anyone else that has interest in the issue to attend. There will be a lot of pressure coming from interest groups pushing their agenda and we need to make sure the trout are not pushed aside in favor of others.

*continued on next page*

## Calendar of Events

May 14 General Membership Meeting  
(Ranch Rudolf) 7 p.m.

June 22 Outdoor meeting at CCC Bridge

August 24 Outdoor meeting at Ranch Rudolf

September 16-18 WaWaSum Outing

October 12 General Membership Meeting  
(Union Cantina) 7 p.m.

December 7 General Membership Meeting/  
Elections (Union Cantina) 7 p.m.

**President** Jeff Jocks  
929-9607 • [jeffjocks@yahoo.com](mailto:jeffjocks@yahoo.com)

**Vice President** Mark Andres  
883-1715 • [markandres883@gmail.com](mailto:markandres883@gmail.com)

**Treasurer** Bob Jocks  
421-1339 • [rjocks@juno.com](mailto:rjocks@juno.com)

**Secretary** Jim Zachow  
357-5345 • [james.zachow@charter.net](mailto:james.zachow@charter.net)

**Director** Steve Largent  
883-9960 • [slargent@gtod.org](mailto:slargent@gtod.org)

**Director** Gabe Schneider  
517-449-6453 • [gabe.schneider@gmail.com](mailto:gabe.schneider@gmail.com)

**Director** Dr. Ken Gum  
620-1529 • [kgumtrout@aol.com](mailto:kgumtrout@aol.com)

**Director** Jack Murray  
933-3339 • [jmurray39@charter.net](mailto:jmurray39@charter.net)

**Director** Tom Wilcox  
883-6839 • [tomhwilcox@aol.com](mailto:tomhwilcox@aol.com)

**Director** Larry Thompson II  
350-3660 • [dooley2shoes@gmail.com](mailto:dooley2shoes@gmail.com)

**Director** Brian Pitser  
933-4730 • [flyshop@thenorthernangler.com](mailto:flyshop@thenorthernangler.com)

**Director** Jon Ray  
631-5701 • [jray@hawkinsflyfishing.com](mailto:jray@hawkinsflyfishing.com)

**Director** Greg Miller  
989-528-0405 • [gmliller@torchlake.com](mailto:gmliller@torchlake.com)

The Adams Chapter has a new Facebook page. Go to Adams Chapter Trout Unlimited and click the "LIKE" button. We look forward to your input.

# ADAMS CHAPTER Update

## President's Report continued

In other important news, you will see below that we gave a \$1000.00 grant for construction of a kids only fishing platform at the pond near Kids Creek between Kohls and the Great Wolf Lodge. This was the first grant from the Bill Fernandez Childrens Activities Fund and we think it is a great one. Getting and keeping kids interested in fishing and the outdoors is critical to maintaining trout and all of the other values we cherish about our wonderful region. I'm sure Bill will be smiling

bigger than the kids who pull their first trout from that pond.

Finally, pay attention to your emails and come out to our summer work and meetings. We have our June meeting at the CCC Bridge on the Manistee and our August meeting at Ranch Rudolf. Both are fun and end early enough to get some fishing in before you head home. Bring a friend or you significant other and join us.

Jeff Jocks

## Annual Banquet Thank You's

*The Board of Directors and members of the Trout Unlimited Adams Chapter would like to thank the following sponsors, donors, contributors and supporters for their generous donation and continued support of our annual fundraising event. It is you, the donors and supporters of our organization that allow this event to be a success. Without you, we have no event. The rewards of your kindness and generosity are seen directly through the success of the various improvement programs that benefit our cold water fisheries. Thank you all very sincerely.*



Local author Mike Deep was the featured speaker

ABC Warehouse; Alpine Oven; Apache Trout Grill; Arnie & Aggie Ochs; Art & Soul Gallery; Backcountry North; Bahle's; Bank of America; Bay Leaf Restaurant, Dennis Fitzpatrick; Becca Schlaff; Ben Bunting; Bob Jocks; Bob Summers; Brad Petzke, Riversnorth; Burritts Market; Captain's Quarters; Casey Smit; Chris Smith; Chuck Hawkins Outfitters; Current Works, Ted Kraimer; David Ruimveld; Derek DeYoung; Diversions; Dr. Ken Gum & Family; Duon Rose; Elk Rapids Wine Shop; Evan Visuri; Federico's Jewelers; Fieldsport; Fish Tales, Tom & Susie Wischman; Folgarelli's; Gates AuSable Lodge; George Pluhr Chiropractor; Glenn Wolff; Golden Shoes; Grant Parsons/Jack Murray; Greg Miller; The Cook's House; Jack's Sport Shop; Jim Newland; Joe Quandt; Julie Fernandez; Marilyn Gum; Master Dry Cleaners; Matt Russell; Mayfield Sugar Bush; Dr. Dave McGreaham; McMillen's Instant Framer, Todd McMillen; Nawbin Beads; Nolan's Tobacconist, Mike Nolan; Oakwood Vet.; Old AuSable Fly Shop; Performance Plus Quick Lube; Ranch Rudolf; Right Brain Brewery; Rock Wilson; Ron Edwards; Sam's Club; Scalawags; Sharon Largent; Dr. Peter Sneed; Spirals; Square Deal Country Store; Stein Decoy's; Streamside Orvis, Dave & Kelly Leonhard; Sweet Pea; The Northern Angler, Brian Pitser; Dr. Steve Thomas; The Winston Rod Company; Trout Town Cafe; Verne Powell; Woodland Creek; Yen Yoga, Sara Harding

## Treasurer's Report

*15th Annual Banquet -  
April 16, 2011*

Net proceeds of \$11,033 were realized from the 15th Annual Banquet held on April 16, 2011. These proceeds were generated from: \$22,005 in ticket sales; \$2,125 in cash donations (given to underwrite the costs of various raffle prizes and auction items); and more than \$13,970 of non-cash donations. Two additional \$125 cash underwriting contributions are expected; when received the total net proceeds from the 15th Annual Banquet will be \$11,283.

## Artist Feature

*Chris Smith of Northern Images Studio has supported our chapter by donating his wonderful wildlife artwork for many years.*

The proceeds from his donations have generated thousands of dollars at our banquets. You may know Chris or at least remember that he won the competition for the 2005 Michigan Waterfowl Stamp and his work has been featured in the Ruffed Grouse Society magazine as well as many other publications like The Pointing Dog Journal, Retriever Journal and others. He is also the author of several books and waterfowl identification guides.

Chris's work is on display at "Gallery 22" which is on M-22 south of Sutton's Bay at Hilltop Rd. Chris's work will be featured at a Grand Opening on Thursday, May 26th from 5:00 to 8:00 p.m. Please take the time to stop by and help support this artist who has supported us with his generosity for a long time.

# ADAMS CHAPTER Update

---

## Online Topographic Mapping Resources

by Gabe Schneider

*Fishing for many of us is not only about the act of fishing, but also about the exploration and adventure in finding that next small creek, pond or beaver dam.*

Some of my best trips have been those that have started by staring at a blue squiggle line on a topo map and wondering, "how do I get there?" While I still keep my dog-eared and Duct Tape reinforced gazetteer in my car, I increasingly rely on electronic resources in planning my adventures.

While Google Maps and Google Earth provide good map and satellite images, it was not until recently that I found a

good online resource for topographic maps.

Two websites in particular can be very helpful in planning your next fishing adventure. The first can be found at <http://www.mappingsupport.com>. This is a free web based map that can be customized to your location. While the set up can be difficult (inputting coordinates etc.) you may want to try the map I set up which defaults to the entire United States.

You can find a link to that map here. Clicking on Map on the far upper right reveals a drop down menu to toggle between traditional map view, satellite, hybrid, terrain, US Topo and My Topo views.

A second site to use is <http://mapper.acme.com/>. I think Acme Mapper has a bit more cluttered view, but still allows the user to toggle between satellite, hybrid terrain and topo views. It does however add a nice overlay feature of NEXRAD radar. So if you are thinking about venturing out and want to know if that storm cell is going to interrupt the afternoon hatch, click NEXRAD and see what weather is approaching.

All in all, technology is making it easier and easier to plan our next fishing trips. I hope that these two websites will be useful to you in answering that question of "how do I get to that squiggly blue line?"

---

## Boardman River Dam Update

*In anticipation of the 2012-scheduled removal of both Brown Bridge and Sabin dams, the City of Traverse City and Grand Traverse County respectively, submitted applications to the Michigan Department of Environmental Quality to conduct a preliminary drawdown of the two impoundments located on the Boardman River yet this summer.*

The City is requesting an interim drawdown of Brown Bridge Pond in the summer or fall of 2011 prior to removal in 2012. This phased approach will reduce the time-frame required to draw the impoundment down in 2012 prior to dam removal; which in turn will provide additional field days

for the actual removal activities since the construction season is shorter in northern Michigan compared to other parts of the state. An interim drawdown also allows portions of the newly exposed bottomlands to become vegetated during the interim drawdown season. It is anticipated that the proposed maximum drawdown using the existing equipment is an additional 8-feet from the current pond level which is roughly 3-feet lower than the operating level. Brown Bridge Dam had an operating head of 33 feet. The presence of zebra mussels on the internal gates may inhibit obtaining the maximum drawdown. If maximum drawdown is achieved engineers figure approximately 100 acres of bottom-

lands will be exposed. The current size of Brown Bridge Pond is 170 acres.

Sabin Pond is approximately 40 acres in size and is scheduled for removal in 2012 assuming funding is secured and applicable permits obtained. Sabin Dam has an operating head of 20-feet. The County previously lowered Sabin Pond two feet for maintenance purposes and anticipate being able to draw it down this summer an additional 4-5 feet if the state permits. Boardman Dam has an operating head of 41-feet and is scheduled for removal in 2013. Boardman Pond was drawn-down 15-feet by the County in 2007. For more information visit [www.theboardman.org](http://www.theboardman.org).

Bayview Professional Centre  
10850 Traverse Highway  
Suite 1111  
Traverse City, MI 49684



# Conservation Resource Alliance

Phone 231-946-6817  
Fax 231-947-5441  
info@rivercare.org  
www.rivercare.org

Coordinating Sensible Stewardship Of The Land

## Notice

**Location:** Traverse City Governmental Center, Second Floor Training Room  
400 Boardman Avenue  
Traverse City, MI 49684  
Facilitator: Todd Kalish, Michigan DNR

### Boardman River Dams Implementation Team

Grand Traverse County	<i>Aloia</i>	City of Traverse City	<i>Ben Bytoss</i>
Traverse City Light and Power Department	<i>Jim Cooper</i>	Grand Traverse Band of Ottawa and Chippewa Indians	<i>Drew Gabel Delevi</i>
Michigan Hydro Relicensing Coalition	<i>Jim Schramm</i>	US Fish and Wildlife Service	<i>Rick Moserhoff</i>
Michigan Department of Natural Resources	<i>Todd</i>	Michigan Department of Environmental Quality	<i>Jim Pelowski</i>
Grand Traverse Conservation District (Ex officio)	<i>Steve</i>	Conservation Resource Alliance (Ex officio)	<i>Army Fisher &amp; Nate</i>
Rotary Camps and Services (Ex officio)		Watershed Center Grand Traverse Bay (Ex officio)	
The Charter Township of Garfield (Ex officio)	<i>Brad Fay</i>	Grand Traverse County Road Commission (Ex officio)	<i>Mary Gillies</i>

Thursday, September 22, 2011  
1:00 p.m.

Traverse City Governmental Center, Second Floor Training Room  
400 Boardman Avenue  
Traverse City, MI 49684

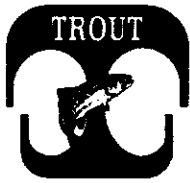
Posted:

The City of Traverse City does not discriminate on the basis of disability in the admission or access to, or treatment or employment in, its programs or activities. Makayla M. Vitous, Assistant to City Manager, 400 Boardman Avenue, Traverse City, Michigan, 49684, 922-4440, TDD 922-4412, has been designated to coordinate compliance with the non-discrimination requirements contained in Section 35.107 of the Department of Justice Regulations. Information concerning the provisions of the Americans With Disabilities Act, and the rights provided thereunder, are available from the ADA Coordinator.

## Agenda

- 1:00-1:05      Introductions
- 1:05-1:20      Public comment
- 1:20-1:25      Additions/deletions to the agenda
- Review and potential approval of the August 18, 2011 meeting minutes:  
                  discussion/decision item (Kalish)
- Review action items from August IT meeting: report (Winkler)
- 1:25-1:30      IT Chair transition: discussion (Kalish)
- 1:30-2:00      Brown Bridge Dam Concept Design for Restoration; discussion/decision (AMEC and  
                  InterFluve)
- 2:00-2:05      Bottomlands Management Working Group update: report (Largent)
- 2:05-2:10      Project documents/plans received since last meeting: report (Winkler)
- 2:10-2:15      Communications update: report (Winkler)
- 2:15-2:20      Fundraising activity report and fundraising updates (discuss "open" items): discussion,  
                  report (Winkler, Beyer)
- 2:20-2:25      Prosperity Plan/Stewardship update: report (Knott)
- 2:25-2:30      AMEC invoice #3 (report by GLFT grant manager): report (Kalish)
- 2:30-2:45      AMEC update (including FEMA floodplain mapping discussion): report (Sandra  
                  Sroonian, Wayne Ingram)
- Authorization for funds: Sabin Pond (drowned river channel probing):  
                  discussion/decision (Sandra)
- 2:45-2:50      Agenda items for the next meeting and meeting review: discussion/decision item (IT)
- 2:50-3:00      Public comment
- 3:00             Adjourn





# ADAMS CHAPTER Update

*A publication of the Adams Chapter of Trout Unlimited  
Traverse City, Michigan • adamschaptertu.com • December 2011*

---

## President's Report

*Fall is upon us and steelhead season is in full swing. I've yet to hookup yet in my few short opportunities, but I'll be trying from now until spring. Most of my steelhead fishing is close to home and often its in the Boardman. I don't get many fish, but the ones I manage to find are cherished. Thinking about steelhead makes me think about fish passage and the Boardman dam removal process. So, I've decided to dedicate this report to that topic.*

I am torn about fish passage because I do love steelhead fishing. I fished for many years with my Grandfather and Dad in the lower Au Sable and have fond memories of sitting in their 14 foot aluminum boat wearing my long underwear, snowmobile suit, gloves, hat and anything else that would allow me to stay out as long as they could on those cold mornings. In those days we fished with skein while anchored above the holes only my Grandfather seemed to know. All but the other old timers would give us funny looks when they passed us going upriver to the more obvious spots. We consistently caught fish and I have the pictures to prove it. The pictures bring me joy less for the fish than for the memories of fishing with my Grandfather.

As great as my steelhead memories are and as much as steelhead fishing is in my blood I still think the Boardman should remain steelhead free. The question of steelhead passage concerns more than just steelhead because fish passage means passing other species too. The fish passage issue is going to be complicated. The options will be many and there will be more opinions than options. However, for me the answer is easy. We know the Boardman has a naturally reproducing brook trout and brown trout population. We know that those fish are throughout the system as far down as the Boardman Dam (Cass Road). Finally, we know that when the

dams are removed the water will be considerably colder and better for brook and brown trout. What we don't know is the full impact steelhead, salmon, and other invasives that find their way upriver will have on them.

I have recently learned that sea lamprey have been making their way past the Union Street Dam and reached Sabin Dam requiring lampricide treatments at Sabin. I have also recently learned that sea lamprey can make their way over fish ladders by climbing up and over each other. Lampricide treatment is very expensive, but that is not the real problem. Lampricide kills lamprey larvae, but it also kills aquatic insects that are necessary for trout. Lampricide won't kill all the insects and won't result in killing off the brook and brown trout, but I can't see any reason to create new and costly problem for the Boardman.

Salmon will presumably remain subject to the weir in downtown Traverse City where most of them are captured. However, anyone that keeps a regular eye on the Boardman knows there are salmon entering the Boardman before the weir goes down and after the weir goes up. If the river is opened up to fish passage there will be salmon in the Boardman. The steelhead and salmon impact to the trout population is unclear. I understand that juvenile steelhead are likely to compete with, and perhaps outcompete, brook trout in all but the upper reaches of the Boardman. That is, the brook trout that are in the middle part of the Boardman right now may no longer be there if the big fish reach it. Brook trout are Michigan's State Fish and are the only native river trout we have. Displacing them and knowingly reducing their range seems to a significant step backwards.

The response will be that other rivers

in Michigan have very healthy brown trout populations that may even thrive because of the egg deposition from salmon and steelhead. But if that is the case then why do we need another one of those rivers? The Boardman and its trout are unique now and will be even more so if left to thrive on their own.

There may also be other impacts to the Boardman that we simply do not know about and cannot predict. The invasive species that now exist in the Great Lakes have caused untold harm from the sea lamprey's devastation of the native Lake Trout to the zebra and quagga mussel depletion of the microscopic base of the foodchain. What will invade the Great Lakes next and what will those invaders do to rivers that are open to their migration? The risks are great and the Boardman should not be subject to those risks. As we know from the Great Lakes, once an invader finds a new place to live, it is impossible to eradicate.

Ultimately, getting rid of the dams will remedy their 100 years of dividing and warming the Boardman. The River will return to a state that it hasn't seen since pre-logging days. There is no logic in removing one harm and creating new and unknown harms. I love steelhead, and salmon fishing is a blast when they are still fresh. However, I am not willing to harm the Boardman when they can still be fished in the lower Boardman not to mention the any number of rivers within a short drive. I am asking you to examine this issue yourself and I think that you will come to the same conclusion. If you do, please make your voice heard as the fish passage question is on the horizon and will be here soon. If you have any comments or thoughts on this issue, please don't hesitate to contact me or any of the other Adams Chapter Board Members.

Jeff Jocks

# ADAMS CHAPTER Update

## Chapter Supports Production of In-Stream Habitat

### Brown Bridge Dam Drawdown

The City of Traverse City's recently completed 6-foot drawdown of the 191 acre Brown Bridge Pond this past fall has already resulted in dramatic changes to the Boardman River. At operating level Brown Bridge dam/pond had a 33-foot head. This is the difference between the pond (operating) level and the surface of the river below. For safety reasons the City decided to drawdown the pond in 2008 by 3.5-feet. With the additional 6-foot drawdown this past fall Brown Bridge Pond is now down approximately 9.5-foot total.

With the 2008 drawdown you couldn't see much of a change at the upper end of the pond. With the recent 6-foot drawdown were beginning to see exciting changes with the formation of a new river channel and even rapids!! The pond is now down to about 100-acres.

Permits for the final removal of Brown Bridge will be submitted this winter with deconstruction beginning in the spring of 2012. To access more pictures, time-lapse videos, or for general information visit [www.theboardman.org](http://www.theboardman.org).

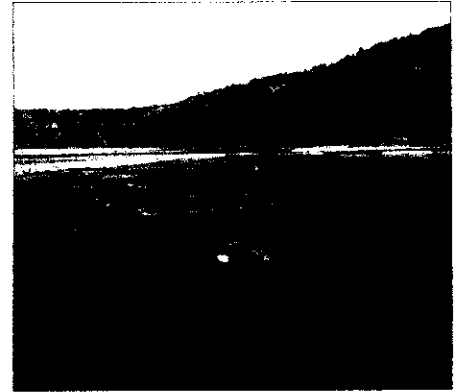
### Blended Restoration Approach

A draft *Concept Design Report for Brown Bridge Dam Removal* was prepared and submitted by dam consultants Inter-Fluve in association with project engineers AMEC Environmental of Traverse City. This is an excellent report and can be found on the website [www.theboardman.org](http://www.theboardman.org) under archived documents.

The report lays out three approaches: 100% Active Restoration; 100% Passive Restoration; and finally a Blended Restoration alternative. The pros and cons of each approach are clearly stated with each scenario. The 100% Active approach has an estimated cost



Brown Bridge Delta – Project engineers plan to dredge a new channel through the delta to control sediment.



Brown Bridge Forming Rapids – It may take decades if not centuries to naturally recruit LWD in the "new" river at Brown Bridge.

of \$6.8M – \$8.3M. The 100% Passive Approach has an estimated cost that ranges between \$2.4M - \$3.0M. After much debate both of these approaches were dismissed. The 100% Active Approach deemed too costly. The 100% Passive Approach, among other concerns, would allow too much sediment to escape downstream.

Once the two 100% alternatives were tossed, the group made up of project stakeholders determined what they felt were the most important elements that we needed to accomplish now. In other words "what must be done" versus "what we would like to see done" which included "what could be done at a later date/phase". Pretty much everyone agreed the top priority was breaching the dam (i.e. dam removal). Beyond that, the group felt that sediment mitigation was most important followed by reconnection of the river to its floodplain. The list went on.

### Sediment Mitigation

Sediment mitigation is one of the Adams Chapter's greatest concerns. Inter-Fluve feels that a majority of the sediment is located in the upper 1/3 of the pond in the delta region. Through probing, they feel the old channel is still intact in the lower 2/3 of the pond. Inter-Fluve estimates that

84,000 cubic yards of sand will be mobilized during drawdown and removal of Brown Bridge Dam unless the sand is dealt with where it currently sits.

To that end they recommend excavating a new river channel through the delta. This will also allow us to shape the banks such that we can establish a floodplain that's so important to handle flood flows. Ideally at this same time we would install trees (LWD) and other habitat features associated with a healthy, productive trout stream. Unfortunately LWD fell out as "what we would like to see done" instead of a "what must be done".

### LWD – Large Woody Debris

LWD is simply trees or parts of trees that provide critical habitat diversity in a healthy trout stream. In most of our rivers in the sections that are large enough to float, paddlers have removed a great deal of this habitat. Fortunately through education and cooperation often times paddlers are now only removing what is necessary to allow for safe navigation and leaving the rest as habitat.

In the case the "new" river at Brown Bridge, from a functional perspective, the channel itself will recover fairly quickly as the pre-dam substrate becomes exposed and organizes into

# ADAMS CHAPTER Update

## In-Stream Habitat *continued*

pools, runs, and riffles. In the *Conceptual Plan* for Brown Bridge project engineers and biologists call for approximately 50 trees/500 feet of river. Unfortunately **without adding LWD this critical in-channel habitat element may take decades if not centuries to establish on it's own.**

### Anglers Taking Action

As anglers and stewards of our coldwater fisheries we cannot let this happen. The Adams Chapter is taking action by applying for an Embrace-A-Stream grant for LWD placement. The Chapter is backing this with a cash match and labor to support this effort. State Council recently submitted a grant to the US Fish & Wildlife Service's Part-

ners For Fish and Wildlife Program for LWD at Brown Bridge. In addition, Rotary of Traverse City, through their Gourmet Game Dinner fundraiser for the Boardman is considering a pledge to match the Adams Chapter up to \$8,000 to support this effort.

We need to raise as much money as possible as quickly as possible for this effort. If anyone would like to provide support, or knows of any other chapters or organizations that would like to help with this vitally important project have them contact Adams Chapter Stream Chair Steve Largent at (231) 883-9960 or [slargent@gtcd.org](mailto:slargent@gtcd.org) We must act quickly.

## Treasurer's Report

(November 8, 2011)

*Current bank balances: checking - \$8,819.68; savings - \$8,738.00; CD - \$10,987.63; and the Bill Fernandez Memorial Children's Activity Fund (BFMCAF) - \$8,052.15.*

The cash balances of TU Adams increased by approximately \$4,700 over the last year. This is the combined result of a \$2,500 contribution to the BFMCAF, a successful banquet and a slight reduction in the total grants sought by (and thus awarded to) other non-profit organizations conduct-

ing cold water habitat protection and restoration. The Board is currently considering a number of ways to best utilize TU Adams resources, including the possibility of leveraging its funds by using them to secure a matching grant to fund a project aimed at protecting the Boardman River from adverse sediment release arising from dam removal.

Most recently the Board approved providing complementary Stream Explorer Memberships to 12 area youth. The resulting \$144 cost was covered with funds from the BFMCAF.

## Calendar of Events

December 7 General Membership Meeting and Annual Election of Directors and Officers, Dam removal presentation by Steve Largent and commentary Bryan Burroughs (Union Cantina)

January 25 General Membership Meeting (Union Cantina)

February 22 General Membership Meeting (Union Cantina)

March 23-25 Traverse City Hunting and Fishing Expo (Grand Traverse Civic Center)

March 28 General Membership Meeting (Union Cantina)

**President** Jeff Jocks  
929-9607 • [jeffjocks@yahoo.com](mailto:jeffjocks@yahoo.com)

**Vice President** Mark Andres  
883-1715 • [markandres883@gmail.com](mailto:markandres883@gmail.com)

**Treasurer** Bob Jocks  
421-1339 • [rjocks@juno.com](mailto:rjocks@juno.com)

**Secretary** Jim Zachow  
357-5345 • [james.zachow@charter.net](mailto:james.zachow@charter.net)

**Director** Steve Largent  
883-9960 • [slargent@gtcd.org](mailto:slargent@gtcd.org)

**Director** Gabe Schneider  
517-449-6453 • [gabe.schneider@gmail.com](mailto:gabe.schneider@gmail.com)

**Director** Dr. Ken Gum  
620-1529 • [kgumtrout@aol.com](mailto:kgumtrout@aol.com)

**Director** Jack Murray  
933-3339 • [jmurray39@charter.net](mailto:jmurray39@charter.net)

**Director** Tom Wilcox  
883-6839 • [tomhwilcox@aol.com](mailto:tomhwilcox@aol.com)

**Director** Larry Thompson II  
350-3660 • [dooley2shoes@gmail.com](mailto:dooley2shoes@gmail.com)

**Director** Brian Pitser  
933-4730 • [flyshop@thenorthernangler.com](mailto:flyshop@thenorthernangler.com)

**Director** Jon Ray  
631-5701 • [jray@hawkinsflyfishing.com](mailto:jray@hawkinsflyfishing.com)

**Director** Greg Miller  
989-528-0405 • [gmiller@torchlake.com](mailto:gmiller@torchlake.com)